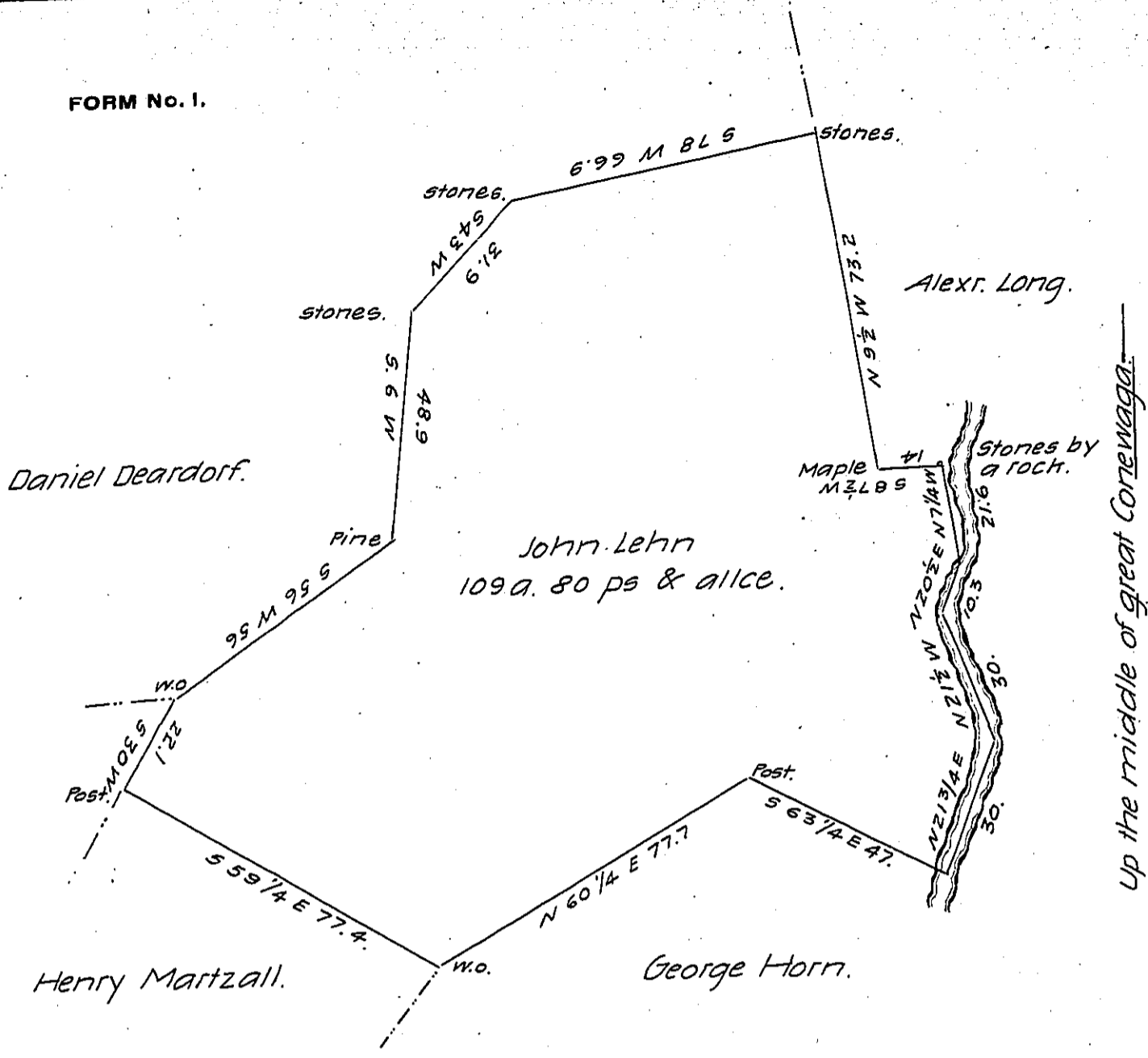


FORM No. 1.



Situate in Strabane Township Adams County Surveyed October
 24th 1810 In pursuance of an order of Survey No 80 granted to John Lehn
 for 100a. dated August 1st 1766, for Henry Martzall Containing one hun-
 dred and nine acres eighty perches & allne

By
 Saml Sloan D.S.

To Andrew Porter Esqr.
 Surveyor General.

IN TESTIMONY that the above is a copy of the original remaining on file in
 the Department of Internal Affairs of Pennsylvania, made
 conformably to an Act of Assembly approved the 16th day of
 February, 1833, I have hereunto set my Hand and caused
 the Seal of said Department to be affixed at Harrisburg,
 this seventh day of March 1906.

Samuel Sloan
 Secretary of Internal Affairs.